

3.0 LANDSCAPE CHARACTER OF NORTH YORKSHIRE AND YORK: IDENTIFYING DISTINCTIVENESS

3.1 The North Yorkshire and York Landscape Classification

3.1.1 This section outlines the hierarchical classification of landscape character units within North Yorkshire and York.

3.1.2 The Character of England Map¹⁵ provides the national framework for more detailed assessments carried out at the County and Local level. The broad National Character Areas defined at 1:250,000 scale provided the context for identifying boundaries of the Primary Landscape Units¹⁶ and Landscape Character Types¹⁷ defined at a scale of 1:50,000 within the Study Area.

County Landscape Character Types

3.1.3 Thirty nine County Landscape Character Types have been defined within the Study Area. These are shown on **Figure 3.1** and described below.

Relationship of County Primary Landscape Units to National Character Areas

3.1.4 As shown on **Figure 3.2** there is generally a good correlation and fit between the County Primary Landscape Units (defined for this Study) and the National Character Areas.

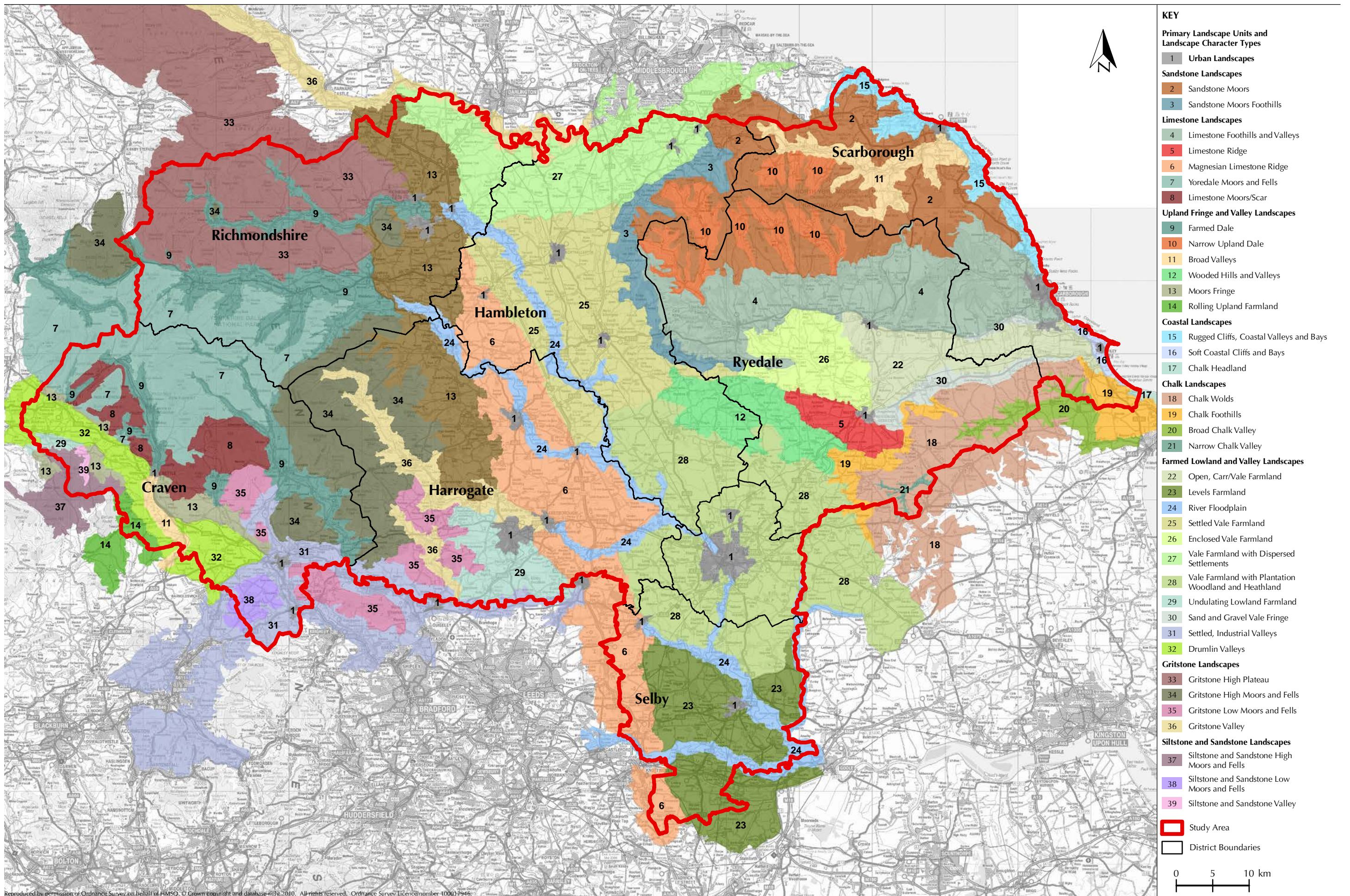
Relationship of County Landscape Classification to National Character Areas

3.1.5 As shown on **Figure 3.3** the County Landscape Classification nests within the broader scale National Character Areas. **Table 1** below sets out the relationship between National Character Areas and the Primary Landscape Units and Landscape Character Types defined at a County-level within the Study Area:

¹⁵ Character of England Map (Countryside Agency, English Nature, RDS, English Heritage, updated 2006)

¹⁶ Primary Landscape Units are groups of Landscape Character Types

¹⁷ Landscape Character Types have a distinct and relatively homogenous composition and pattern of physical and cultural attributes – including geology, landform, hydrology, land cover and historical land use. Landscape Character Types are generic in form and may occur in different parts of the Study Area.



Reproduced by permission of Ordnance Survey on behalf of HMSO. © Crown copyright and database right 2010. All rights reserved. Ordnance Survey Licence number 100017946.